



Jennie's Meadow

Choose peace of mind in your new single family home, built with care and quality – including professional front yard lawn maintenance.

The ANGELES

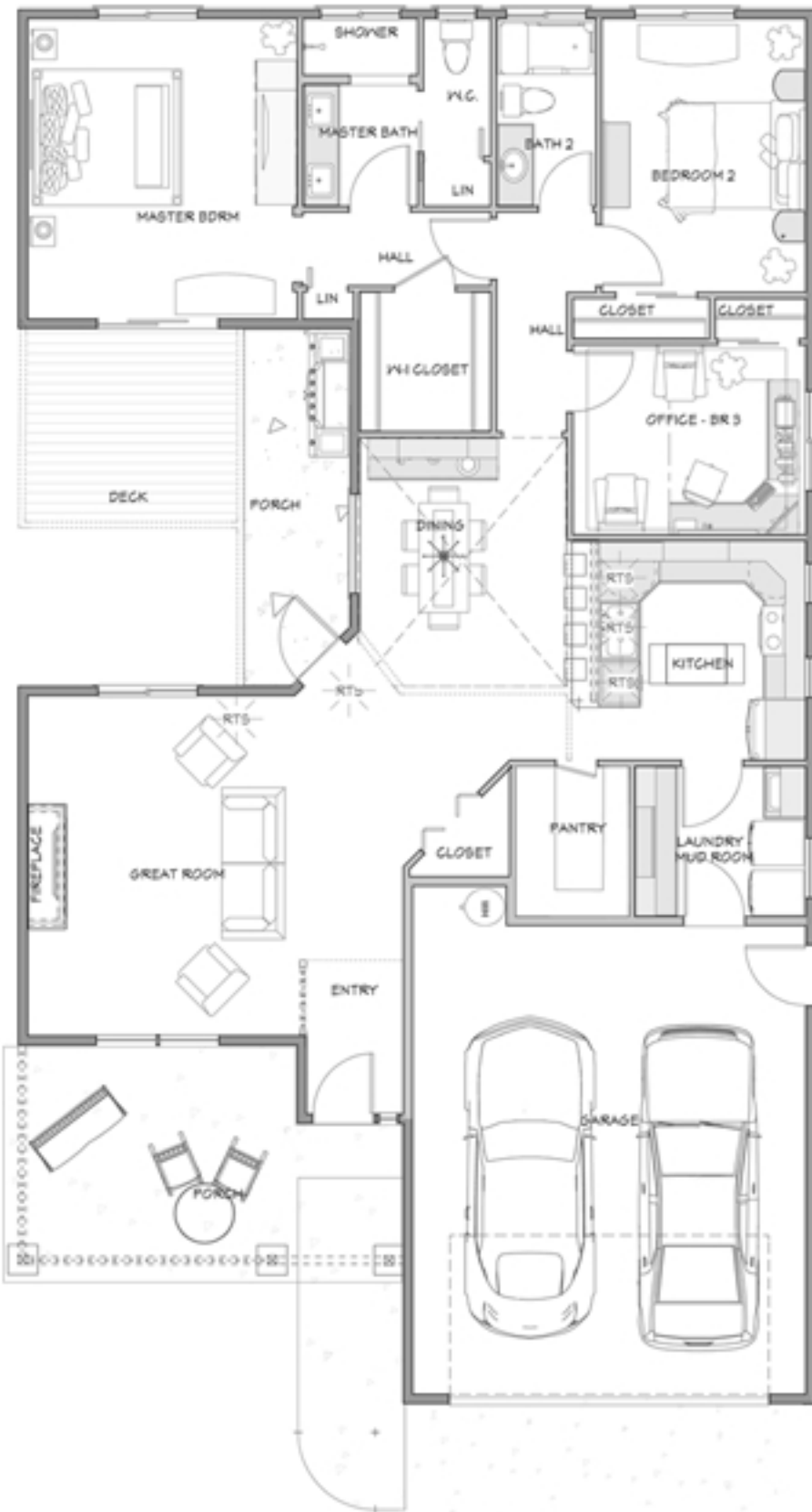
Open Floor Plan: This home features a great room with fireplace and entertainment area, a dining room with a 12 foot tall ceiling and a master bedroom all opening to a gracious patio at the center of the home that blends in to feel as part of the living area. The rest of the home features a 9 foot ceiling for a spacious feel that also allow oversized doors and windows to add space and abundant natural light.

Luxurious Master Suite: A hallway entry adds privacy and there's access to a partially covered patio. Master Bath features a dual sink vanity, an enclosed commode at comfort height and a dual seat shower; all just a couple steps from a walk-in closet.

Covered Front Porch: A spacious 11 X 19 covered porch with columns and rails offers interesting architectural detail plus more outdoor opportunities to enjoy sunny afternoons. The porch also leads to a no-step entry into this gracious home.

Attention to Detail: Walls have rounded corners; trim and molding are white painted enamel; hardware matches throughout the home.

More Features: A walk-in pantry allows plenty of storage. Kitchen features a breakfast bar across from under cabinet windows and a solar tube for sunlit mornings. Centralized media panel (with Cat-5 wiring), energy efficient ductless heat pump and a two car attached garage with 4 feet of extra depth and no-step entry for extra storage or workspace.



WesterraHOMES
YOUR DREAM HOME BUILDER

WE BUILD ON YOUR LOT. CALL WESTERRA HOMES (360) 500-0633