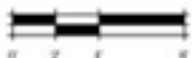


BRIDGEWAY PLAN
 First Floor 1,284 SF
 Second Floor 568 SF
 TOTAL, 1,852 SF
 GARAGE, 462 SF



**The BRIDGEWAY
 Townhome Plan, Two Story**

Page 1

With a Jennie's Meadow townhome, you'll enjoy the lifestyle of a single family home, with all the convenience of a managed yard and exterior!

Single family home lifestyle: Each townhome at Jennie's Meadow comes with a deeded lot—these are not condominiums. Every townhome has its own interior walls and they're separated by an airspace from the walls of the adjacent townhome. There is sound board between walls and insulation within the walls. A covered porch and oversized front door complete the feel of a single family home.

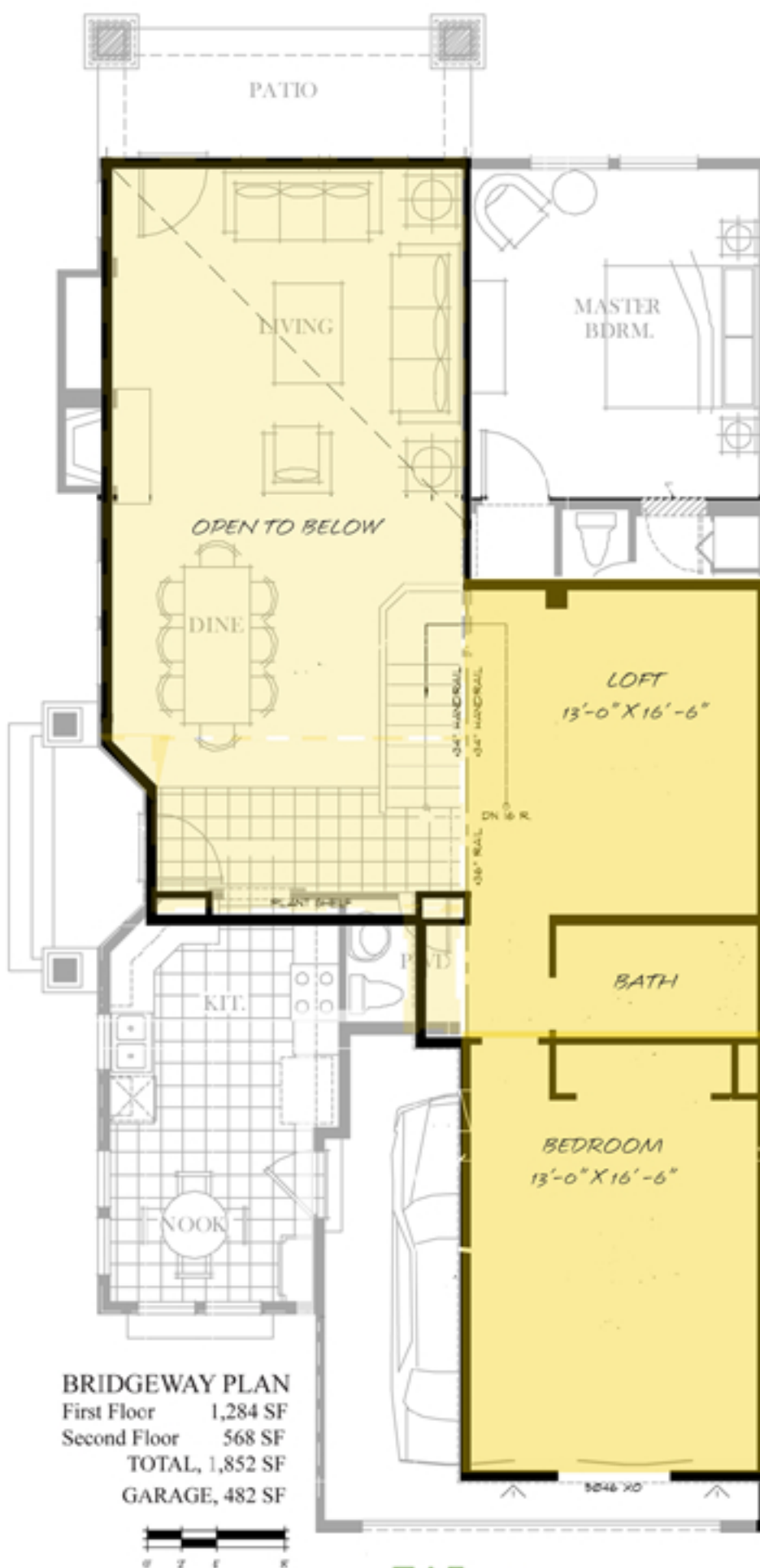
Designs feature convenience, comfort and light-filled spaces: Stroll through a **dramatic entry** into a gracious living area with a **vaulted ceiling**. Enjoy the convenience of a **first-floor master bedroom**. Relax with a view of the park from your sunny **breakfast nook** or entertain friends and family in the great room leading to the outdoor **covered patio**.

No need to worry about bringing in those groceries—every townhome has an **attached two-car garage**

Continued, page 2



WE BUILD ON YOUR LOT. CALL WESTERRA HOMES (360) 509-0633



BRIDGEWAY PLAN
 First Floor 1,284 SF
 Second Floor 568 SF
 TOTAL, 1,852 SF
 GARAGE, 482 SF



**The BRIDGEWAY
 Townhome Plan, Two Story**

Page 2

with automatic door opener and convenient access to the kitchen.

Private second-floor retreat:
 With a spacious loft, a bathroom and a bedroom, what fun you'll have with this thoughtful second-floor retreat. It can serve as a getaway space for guests or grandkids, two home offices, a hobby room and den – the possibilities are endless!

Natural setting, trails, wildlife:
 This is the best location in Sequim, with shopping and recreation just a few steps away, and easy freeway access. Take a brisk walk on tree-lined streets to Jennie's Meadow trail system. The trail meanders through a preserved eagle corridor—a 200-foot wide, permanent natural reserve for visiting bald eagles. Walk down the street to Railroad Bridge Park along the Dungeness River. Sequim's famous sunshine and outdoor lifestyle are just steps away!

◀ **SECOND FLOOR PLAN**

With 568 SF of added space for a second bedroom and bath, plus generous loft area for office or hobby room, the spacious Bridgeway plan suits many owners.