



# Jennie's Meadow

## The WALKER

*Choose peace of mind in your new single-family home, built with care and quality—including professional lawn and landscaping maintenance.*

Designed for maximum utilization of 1,580 square feet, it's the newest floor plan at Jennie's Meadow.

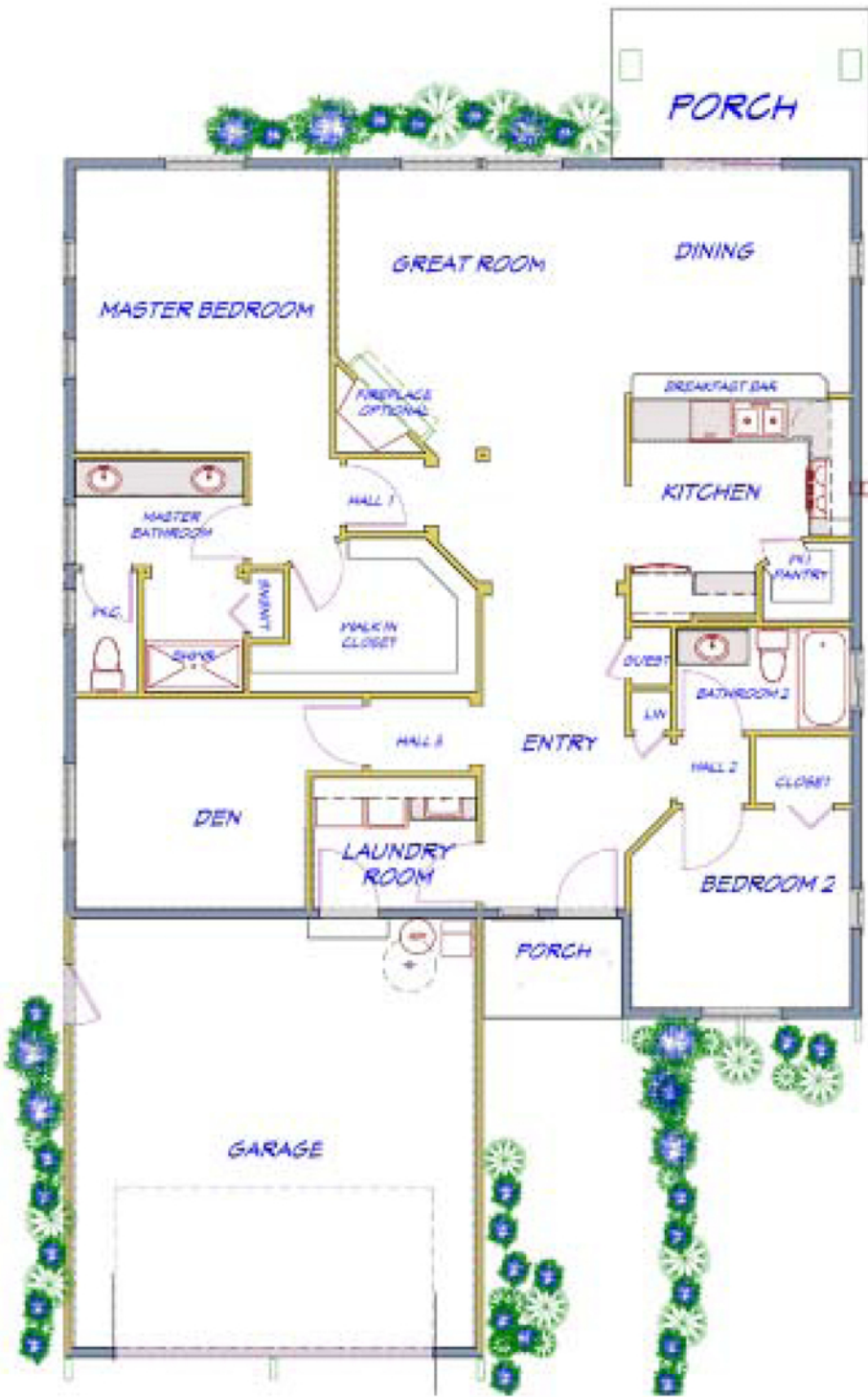
**Thoughtful floor plan:** Home features a great room with optional fireplace and adjoining dining room that looks out through a covered porch. The adjacent kitchen has a convenient pass-through and breakfast bar for casual snacking.

**Luxurious master suite:** A hallway entry adds privacy; there's a spacious walk-in closet, two vanity sinks, shower with built-in seats and private commode.

**Guest suite:** The second bedroom features its own bath, ensuring privacy for you and your guests or family.

**Maximum attention to detail:** Walls have distinctive rounded corners; all trim and molding are white painted enamel; hardware matched throughout the home.

**More features:** Fully landscaped yards with irrigation; stylish and efficient kitchen designs with tiled counters; a separate laundry room with cabinetry; centralized media panel (with Cat-5 wiring); energy efficient heat pumps; and a two-car, attached garage. The expansive rear patio and covered porches in the front and back of your Westerra Home invite you to enjoy Sequim's wonderful weather all year long.



**Two architectural styles:** Choose exterior details and trim to create a traditional, classic feel or select the solid Craftsman look. Both feature clapboard siding with shingled accents, and a selection of gentle, earth-tone paint colors.



WE BUILD ON YOUR LOT. CALL WESTERRA HOMES (360) 509-0633