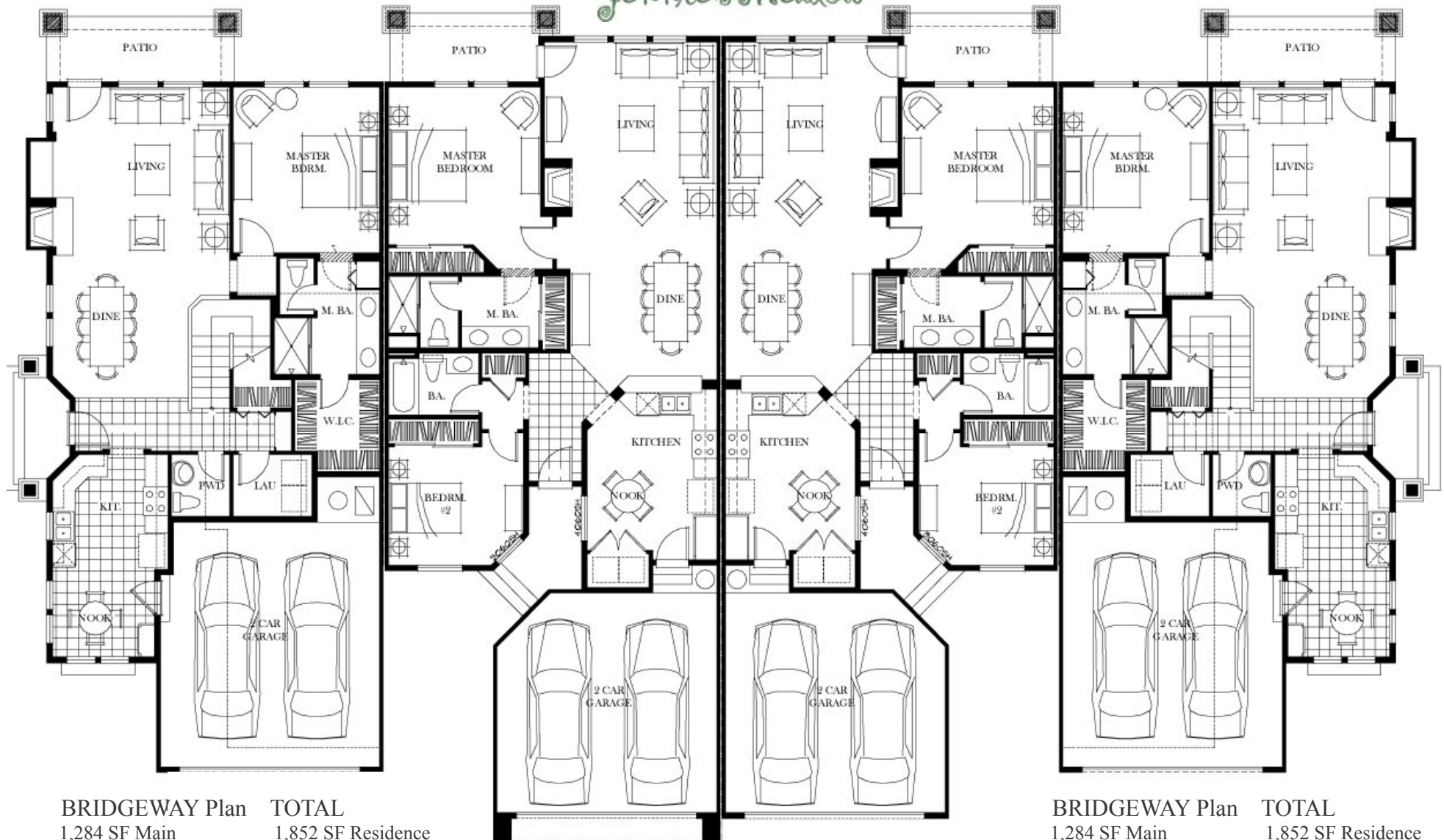


**OVERVIEW, 4-UNIT TOWNHOMES
BRIDGEWAY & WESTBROOK PLANS**



BRIDGEWAY Plan TOTAL
 1,284 SF Main 1,852 SF Residence
 568 SF Second Floor 462 SF Garage

WESTBROOK Plans 1,331 SF 409SF Garage

BRIDGEWAY Plan TOTAL
 1,284 SF Main 1,852 SF Residence
 568 SF Second Floor 462 SF Garage



For more information or to reserve your opportunity to purchase a Townhome at Jennie's Meadow, call Westerra Homes, (360) 697-3065.